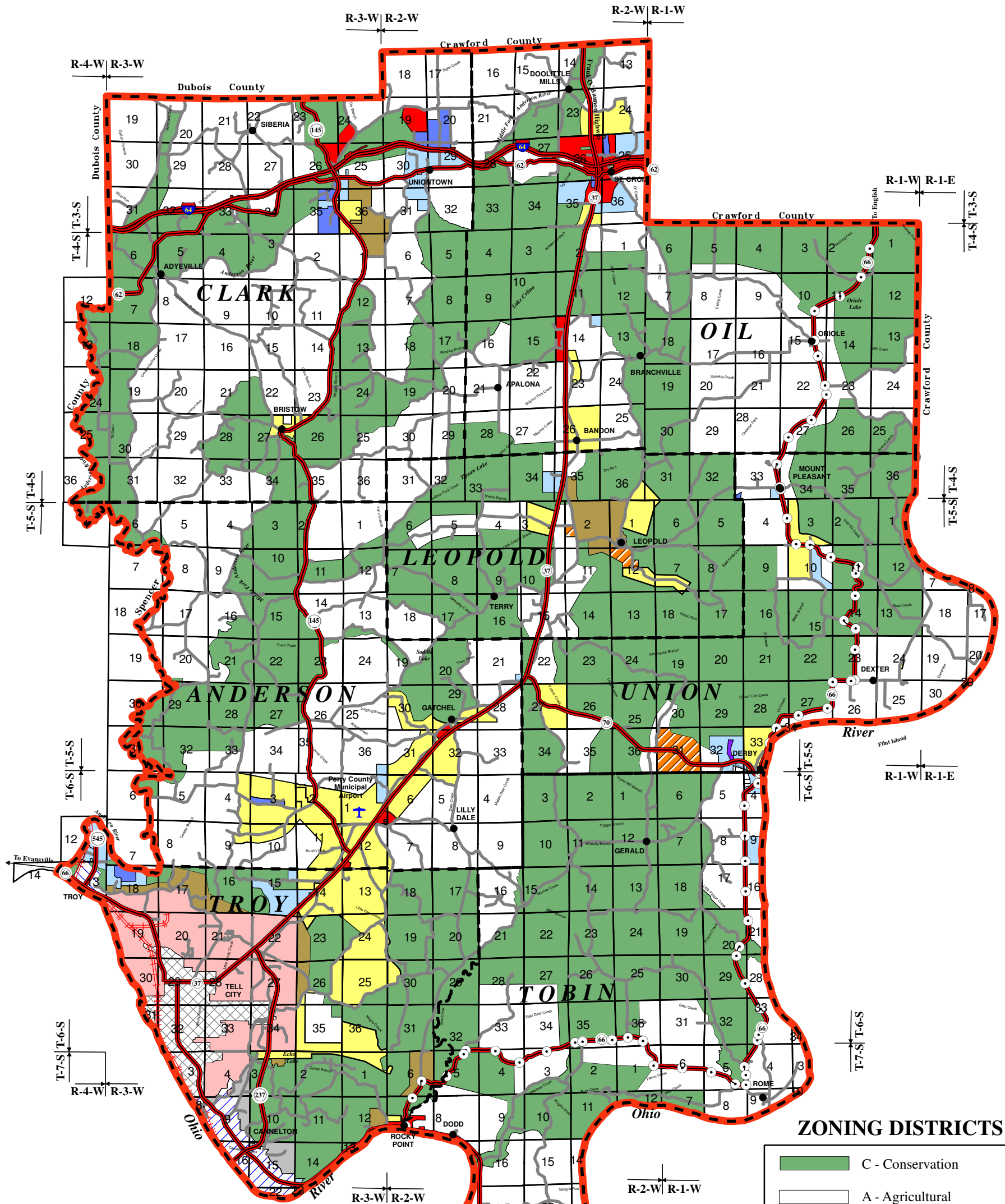


ZONE MAP - PERRY COUNTY, INDIANA



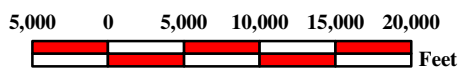
ZONING DISTRICTS

	C - Conservation
	A - Agricultural
	R-1 Residential
	R-2 Residential
	B-1 More Intensive Business
	B-2 Less Intensive Business
	I-1 Light Industrial
	I-2 Heavy Industrial
	I-3 Special Industrial

LEGEND

	County Line
	Corporate Limits - Cannelton
	Zoning Area - Cannelton
	Corporate Limits - Tell City
	Zoning Area - Tell City
	Corporate Limits - Troy
	Streams
	Local Roads
	State Roads
	Ohio River Scenic Route

Graphic Scale



Note: This map reflects revisions up to and including Ordinance Number O-C-04-10

Indiana 15 Regional Planning Commission 221 E. First St. Ferdinand, IN 47532 Phone: (812) 367-8455 Fax: (812) 367-8171 Website: www.ind15rpc.org		
TITLE: ZONE MAP - PERRY COUNTY, INDIANA		
Prepared By: L.G.	Reviewed By: L.G.	Originated: July 1990
Revised: Dec. 1996 LG; Aug. 1998-LG; May 2000-LG; June 2005-TM		
Revised: N:\Counties\Perry\Maps\Zone Maps\Perry County ARC GIS		
© Copyright 2006 Indiana 15 Regional Planning Commission		